

CLEMENTI

ESTATE IMPROVEMENT WORKS



Upgraded Drop-Off Point at Blk 324 Clementi Ave 5



New Sheltered BFA Ramp at Blk 350 Clementi Ave 2

CLEMENTI

ESTATE IMPROVEMENT WORKS



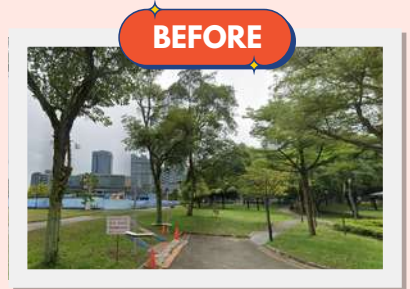
Upgraded Elderly Fitness Corner at
Clementi Cascadia Blk 440 Clementi Ave 3



Upgraded Recreation Area around the Playground
at Blk 415 Commonwealth Avenue West

BUKIT BATOK EAST

ESTATE IMPROVEMENT WORKS



New Covered Linkway over Existing Footpath near MPH connecting Block 285C Toh Guan Road to Jurong Gateway Road (IMM)



Upgraded Fitness Corner at Blk 242 Bukit Batok East Ave 5



New Drop-Off Point at Blk 289D Bukit Batok Street 25

JURONG CENTRAL

ESTATE IMPROVEMENT WORKS



AFTER

BEFORE



New Replacement of Timber Decking at Block 419 Jurong West Street 42

BEFORE



New Community and Recreational Zone at Blk 340 Jurong East Ave 1



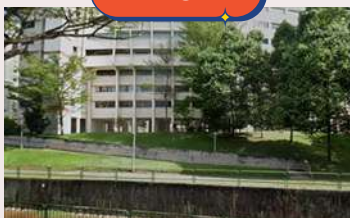
AFTER



AFTER



BEFORE



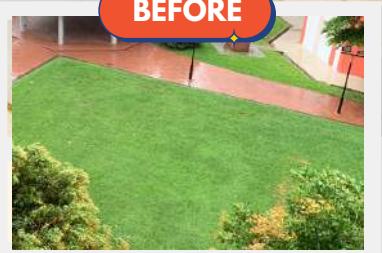
Elevated Fitness Platform at Blk 332 Jurong East Ave 1

YUHUA

ESTATE IMPROVEMENT WORKS



BEFORE

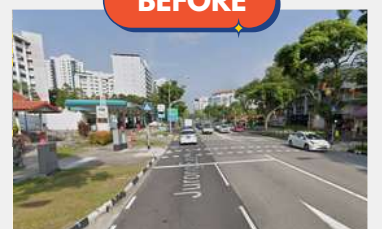


Upgraded Allotment Garden at Blk 108 Jurong East Street 13



AFTER

BEFORE



New High-Low Covered Walkway at Pedestrian Crossing between
Blk 229 Jurong East Street 21 to Blk 252 Jurong East St 24

YUHUA

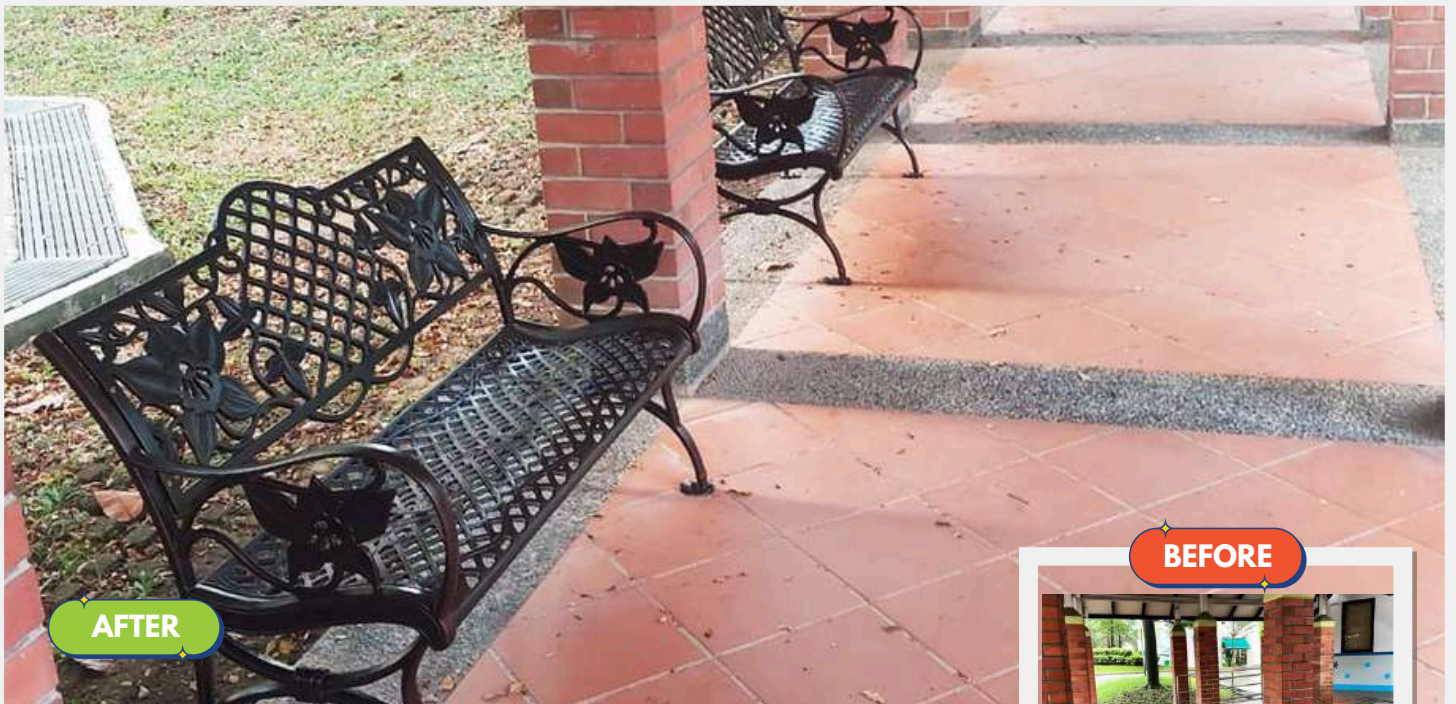
ESTATE IMPROVEMENT WORKS



BEFORE

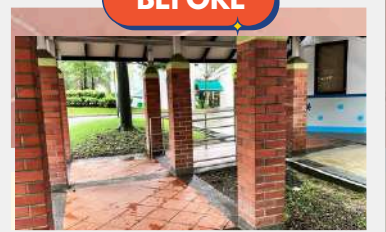


New BFA Ramp with Sheltered Walkway at Blk 261 Jurong East St 24



AFTER

BEFORE



New Benches near Drop-Off Point of Blk 241 Jurong East Street 24

